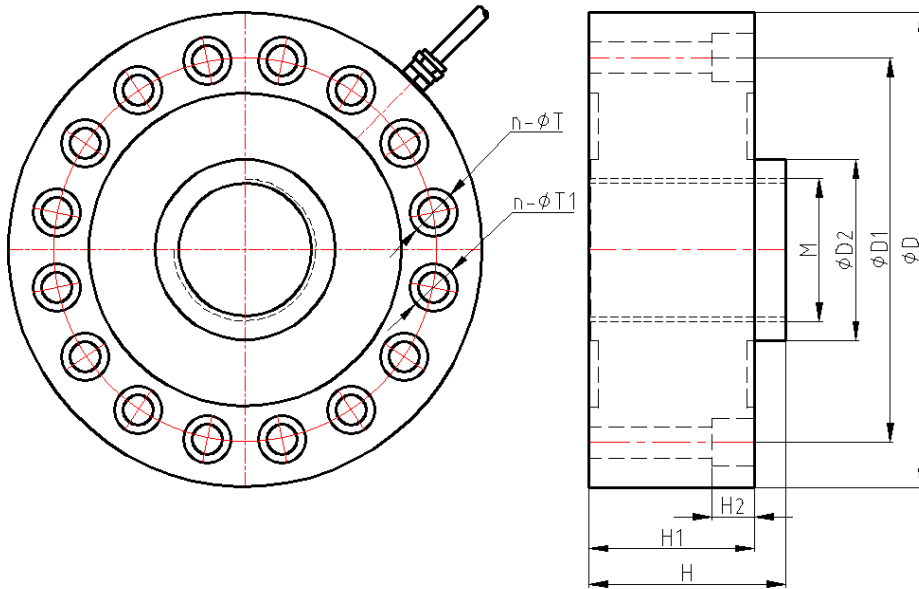




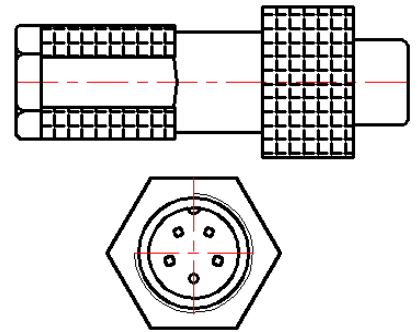
## DESCRIPTION

Low profile, suitable for tension and compression using. Small deflection, the compact construction is suitable for withstanding extraneous loads. High permissible dynamic load, protection to IP67.

## OUTLINE DIMENSIONS in millimeters ( mm )



12G waterproof plug available.



Capacity	Size mm								
t	D	D1	D2	H	H1	H2	M	n-ΦT	n-ΦT1
30	120.6	101.8	43	48	41	10.5	M32 × 1.5	8-Φ14	8-Φ8.5
60	153	130	70	58	51	16	M40 × 1.5	8-Φ17	8-Φ10.5
100	200	162	76	83	70	18	M64 × 3	16-Φ20	16-Φ13
200	295	245	136	105	100	--	M90 × 3	--	8-Φ22

## SPECIFICATIONS

Capacity	t	30, 60, 100, 200
Rated output	mv/v	2.0 ± 0.1%
Non-linearity	%F.S	0.05
Hysteresis	%F.S	0.05
Creep in 30 minutes	%F.S	0.05
Zero balance	%F.S	± 1
Input resistance	Ω	750 ± 20
Output resistance	Ω	700 ± 5
Insulation resistance	MΩ	≥ 5000
Excitation voltage	V	10V (maximum 15V) AC/DC
Environmental protection		IP67
Safe overload	%F.S	150
Ultimate overload	%F.S	300
Operating temperature range	°C	-10 ~ +40
Material		Alloy steel
Cable Length	m	5

## FEATURE

- Axle-load scale, warehouse scale, experimental machine

## Wiring Schematic Diagram

