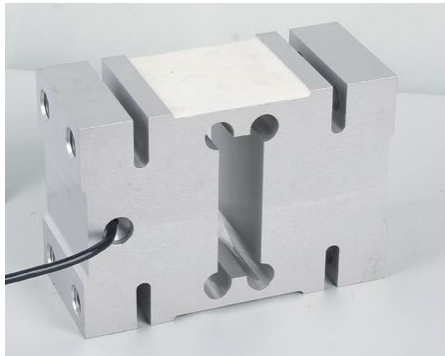


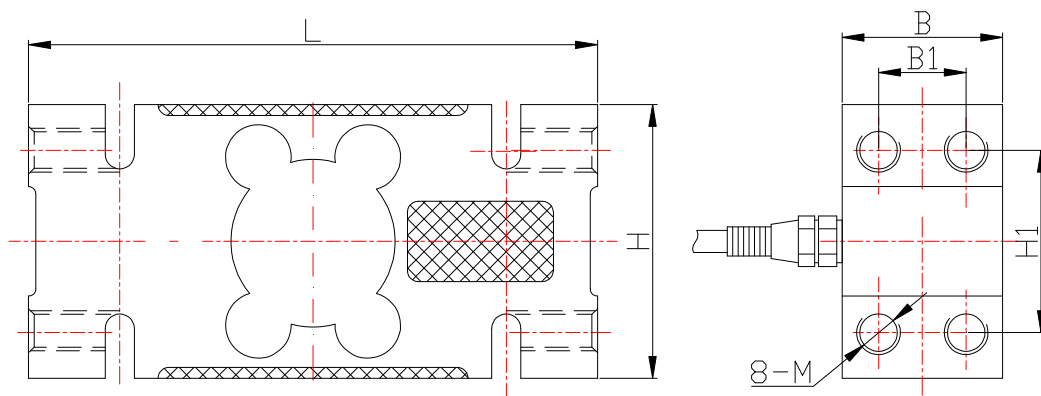
# ML-3 Sensor



### Product Characteristic

Box type single point loading structure. Conner adjusted before delivery to ensure consistent output in stated load plane. Simple to install, easy to use. Suitable for electronic platform scale, etc.

### OUTLINE DIMENSIONS in millimeters (mm)



Capacity 量程	Size 尺寸 mm					
kg	L	B	B1	H	H1	M
50-200	156	44	24	75	50	M12X1.75
250-750	146	60	36	95	70	M12X1.75
1000-2000	176	76	46	123	95	M16X2

## SPECIFICATIONS

Capacity	kg	50-2000kg
Rated output	mv/v	2.0±0.002
Non-linearity	%F.S	0.03
Hysteresis	%F.S	0.03
Creep in 30 minutes	%F.S	0.03
Zero balance	%F.S	±1
Input resistance	Ω	380±10
Output resistance	Ω	350±3
Insulation resistance	MΩ	≥5000
Excitation voltage	V	10V (maximum 15V) AC/DC
Environmental protection		IP67
Safe overload	%F.S	150
Ultimate overload	%F.S	300
Operating temperature range	°C	-10~+40
Material		Alloy steel

## Wiring Schematic Diagram

