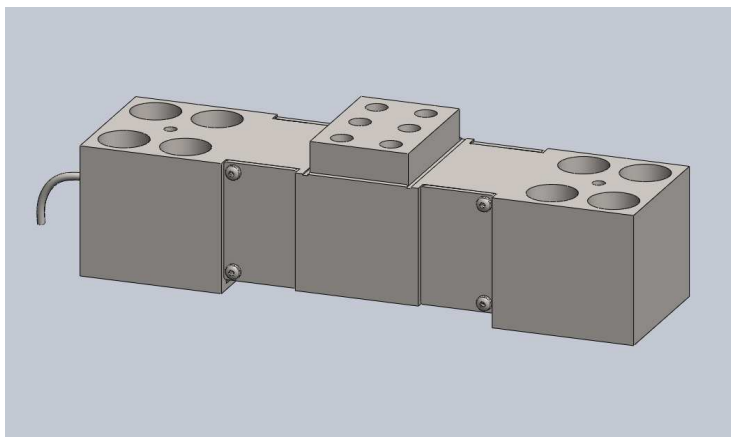


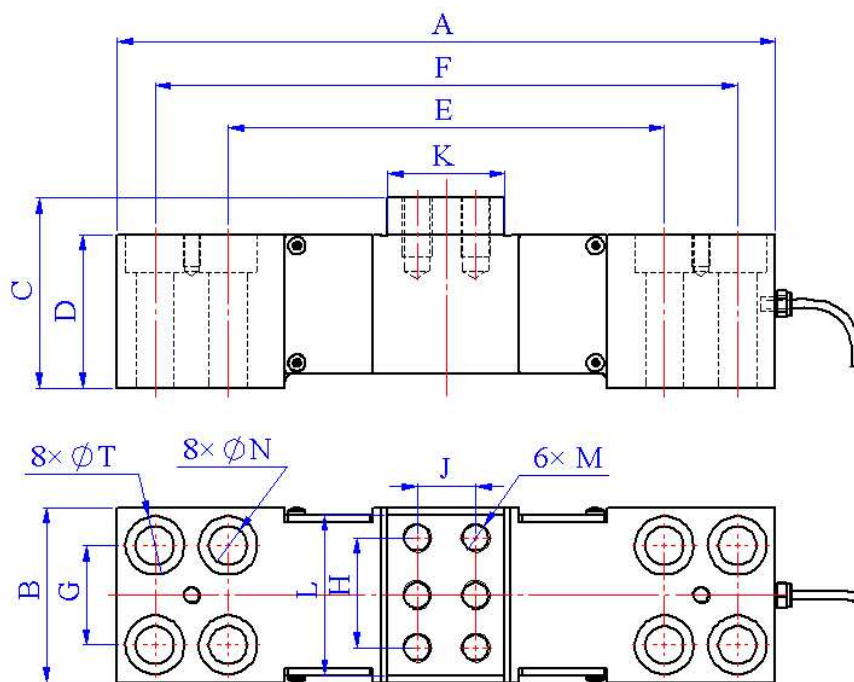
# MQC3-B Sensor



## DESCRIPTION

This is a double side shear beam sensor is designed for large capacity ladle scale weighing. Should be widely in Steel embody scale.

## OUTLINE DIMENSIONS in millimeters (mm)



Capacity	Size mm													
t	A	B	C	D	E	F	G	H	M	N	T	J	K	L
50	450	120	130	105	298	398	68	75	M20 ↓ 30	Φ26	Φ36	40	80	110
100	500	140	143	118	336	444	80	90	M24 ↓ 36	Φ30	Φ45	44	90	130
150	560	160	158	133	372	500	94	102	M24 ↓ 36	Φ33	Φ45	44	90	150
200	620	180	175	150	400	560	114	110	M24 ↓ 36	Φ33	Φ45	44	90	160

## SPECIFICATIONS

Capacity	t	50, 100, 150, 200
Rated output	mv/v	1.5±0.1%
Non-linearity	%F.S	0.1
Hysteresis	%F.S	0.1, 0.05
Creep in 30 minutes	%F.S	0.05
Zero balance	%F.S	±1
Input resistance	Ω	700±10
Output resistance	Ω	700±2
Insulation resistance	MΩ	≥5000
Excitation voltage	V	10V (maximum 15V) AC/DC
Environmental protection		IP67
Safe overload	%F.S	120
Ultimate overload	%F.S	200
Operating temperature range	°C	-10~+40
Material		Alloy steel
Cable Length	m	16

## Wiring Schematic Diagram

