

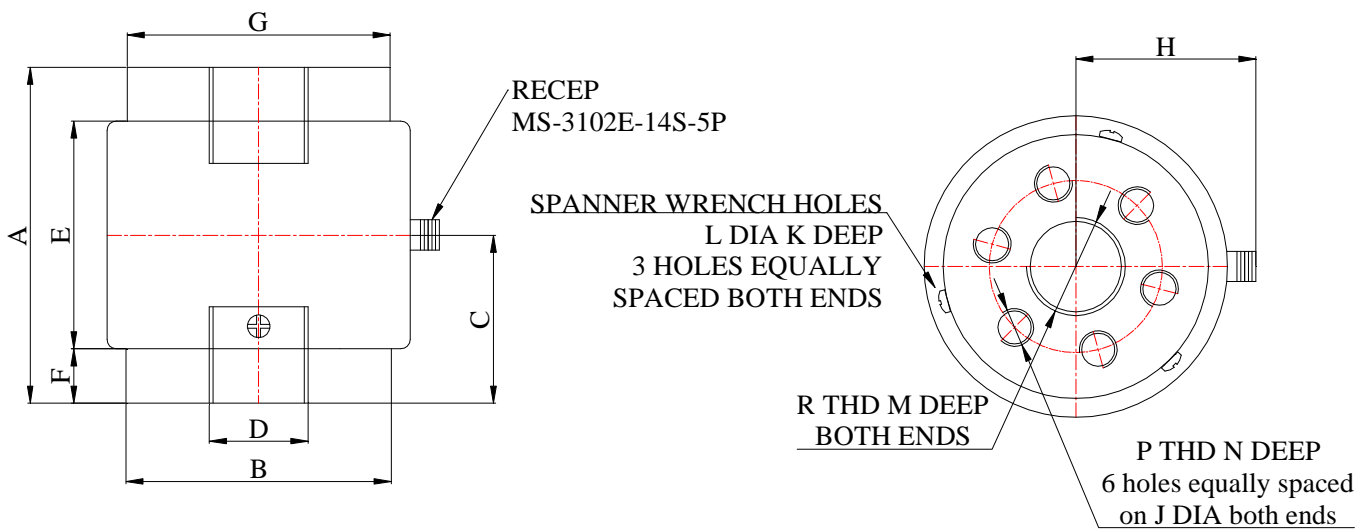
# MZ16 Sensor



## DESCRIPTION

Column type, fatigue-resistant load cells are extremely resistant to extraneous bending and side loading forces, the structure virtually eliminates bending strains at the strain gage minimizing the primary cause of load cell failure, dual bridge option available for feedback control and redundancy. Double in tension and compression.

## OUTLINE DIMENSIONS in millimeters (mm)



Capacity (Klb)	Size (mm)							
	A	B	C	D	E	F	G	H
25~250	177.8	139.7	88.9	M52×2	120.7	28.7	138.4	91.2
Capacity (Klb)	Size (mm)							
	J	K	L	M	N	P	R	
25~250	88.9	7.9	9.5	50.8	31.8	M20×2.5	M52×2	

## SPECIFICATIONS

Capacity	lb	25K,50K,100K,150K,250K
	N	100K,200K,500K,750K,1000K
Rated output	mv/v	2.0±0.1%
Non-linearity	%F.S	0.2
Hysteresis	%F.S	0.2
Creep in 30 minutes	%F.S	0.05
Zero balance	%F.S	±1
Input resistance	Ω	350±10
Output resistance	Ω	351±3
Insulation resistance	MΩ	≥5000
Excitation voltage	V	10V (maximum 15V) AC/DC
Environmental protection		IP67
Safe overload	%F.S	1 50
Ultimate overload	%F.S	300
Operating temperature range	°C	-10~+40
Material		Alloy steel & Stainless steel

## Wiring Schematic Diagram

Standard calibration Tension(+) and Compression(-)

