

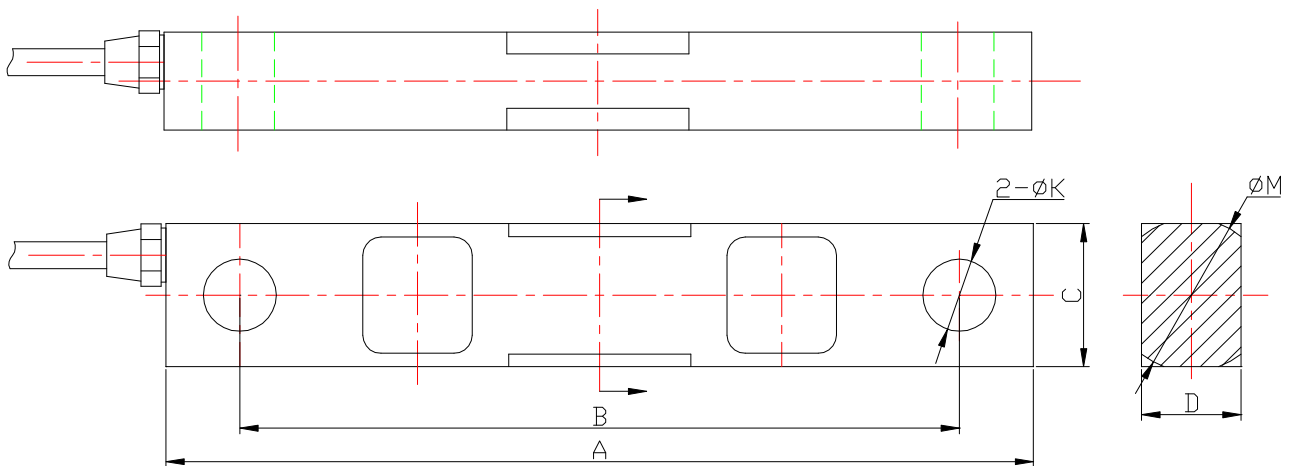
MQ5 Sensor



DESCRIPTION

High precision and high reliability, good stability. Easy installation, good compatibility, Suitable for canned scale, container scale, quantitative packaging system, etc.

OUTLINE DIMENSIONS in millimeters (mm)



Capacity	Size (mm)					
	A	B	C	D	K	N
Klb						
1~5	190.5	158	31.8	31.8	12.7	31.5
10~25	222.3	190.5	49.3	36.6	20.6	50.8
50~75	342.9	292.1	74.7	62	33.3	76.2

SPECIFICATIONS

Capacity	Klb	1K, 5K, 10K, 20K, 25K, 50K, 75K
Rated output	mv/v	2.0±0.1%
Non-linearity	%F.S	0.03
Hysteresis	%F.S	0.03
Creep in 30 minutes	%F.S	0.03
Zero balance	%F.S	±1
Input resistance	Ω	750±10
Output resistance	Ω	702±3
Insulation resistance	MΩ	≥5000
Excitation voltage	V	10V (maximum 15V) AC/DC
Environmental protection		IP67
Safe overload	%F.S	150
Ultimate overload	%F.S	300
Operating temperature range	℃	-10~+40
Material		Alloy steel
Cable Length	m	12

Wiring Schematic Diagram

