

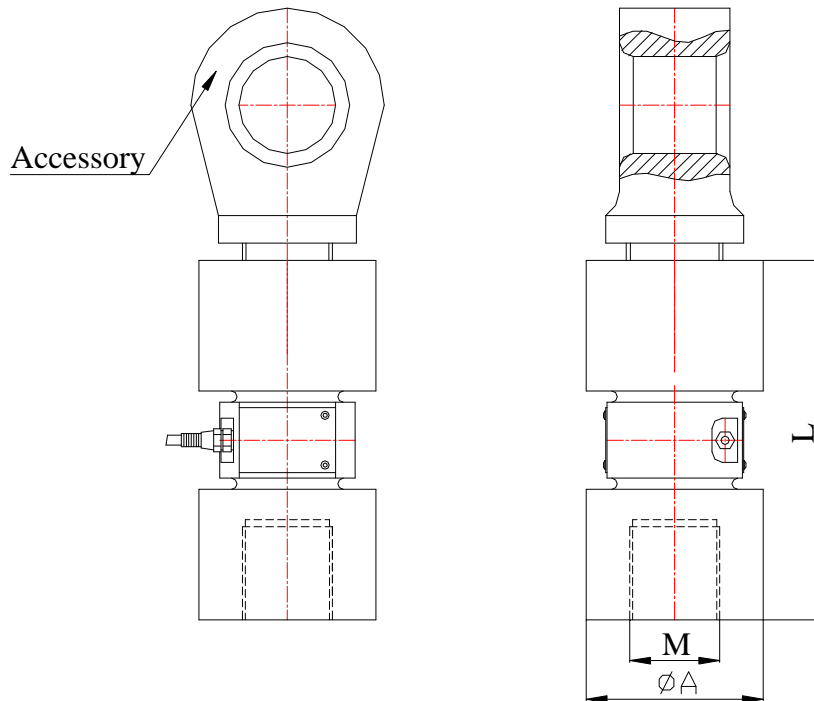
# MZ13 Sensor



## DESCRIPTION

Big crane equipment, testing machine.

## OUTLINE DIMENSIONS in millimeters (mm)



Based on the size of the customers requirements design

| Capacity | Size mm |       |     |
|----------|---------|-------|-----|
|          | L       | M     | A   |
| t        |         |       |     |
| 20       | 185     | M42×3 | 78  |
| 30,40    | 225     | M56×3 | 105 |
| 60       | 260     | M65×2 | 125 |

## SPECIFICATIONS

|                             |      |                         |
|-----------------------------|------|-------------------------|
| Capacity                    | t    | 20,30,40,60             |
| Rated output                | mv/v | 2.0±0.25%               |
| Non-linearity               | %F.S | 0.2                     |
| Hysteresis                  | %F.S | 0.2                     |
| Creep in 30 minutes         | %F.S | 0.2                     |
| Zero balance                | %F.S | ±1                      |
| Input resistance            | Ω    | 400±10                  |
| Output resistance           | Ω    | 352±3                   |
| Insulation resistance       | MΩ   | ≥5000                   |
| Excitation voltage          | V    | 10V (maximum 15V) AC/DC |
| Environmental protection    |      | IP67                    |
| Safe overload               | %F.S | 150                     |
| Ultimate overload           | %F.S | 300                     |
| Operating temperature range | °C   | -10~+40                 |
| Material                    |      | Alloy steel             |
| Cable Length                | m    | 12                      |

## Wiring Schematic Diagram

