

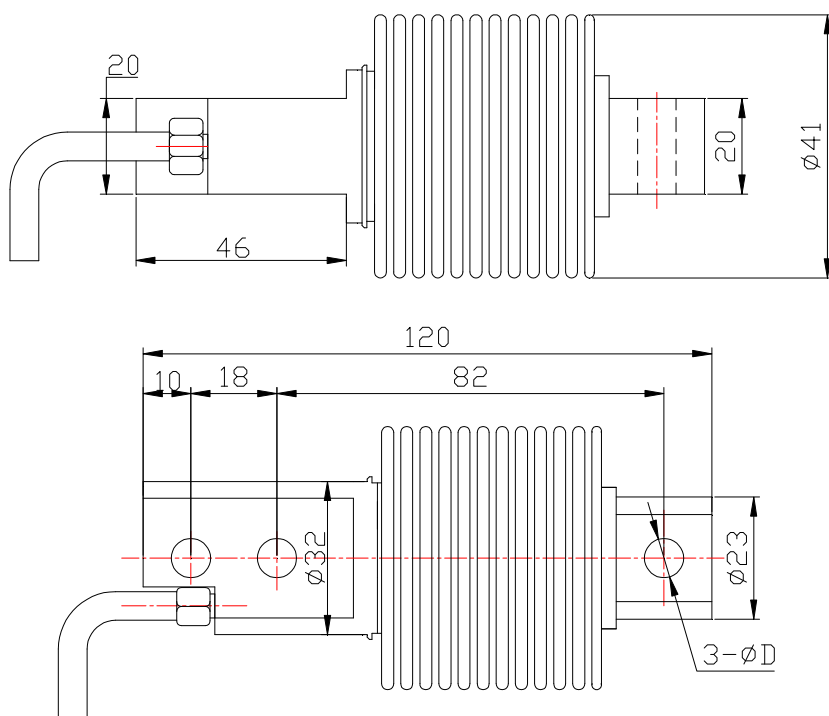
MSBS2 Sensor



DESCRIPTION

Cantilever beam load cell, hermetically sealed stainless steel metallic crinkle. Tension and compression; anti-overload, high fatigue resistance and anti-deflective loading. Suitable for electronic belt scale, hopper scale, etc.

OUTLINE DIMENSIONS in millimeters (mm)

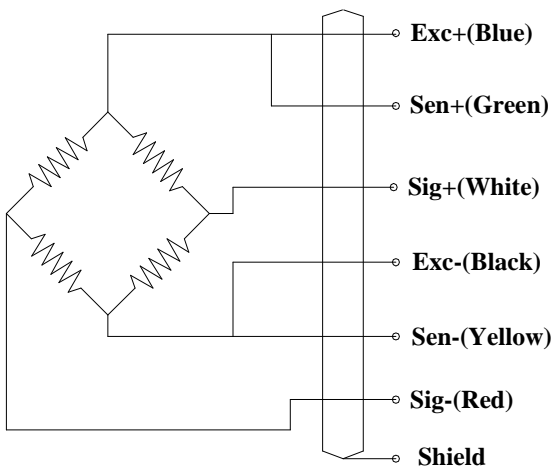


Capacity	Size mm	Weight
kg	D	(kg)
5,10,20,50,100,200,500	8.2	0.5

SPECIFICATIONS

Capacity	kg	5,10,20,50,100,200,500
Rated output	mv/v	2.0±0.1%
Non-linearity	%F.S	0.03
Hysteresis	%F.S	0.03
Creep in 30 minutes	%F.S	0.03
Zero balance	%F.S	±1
Input resistance	Ω	350±5
Output resistance	Ω	350±2
Insulation resistance	MΩ	≥5000
Excitation voltage	V	10V (maximum 15V) AC/DC
Environmental protection		IP67
Safe overload	%F.S	150
Ultimate overload	%F.S	300
Operating temperature range	°C	-10~+40
Material		Stainless steel & Alloy steel
Weight	kg	
Cable Length	m	3

Wiring Schematic Diagram



FEATURE

- Capacities 5~500kg
- Stainless steel construction
- IP68 protection
- Welded on metal bellow

INTERCHANGEABLE PRODUCTS

VISHAY Model 355