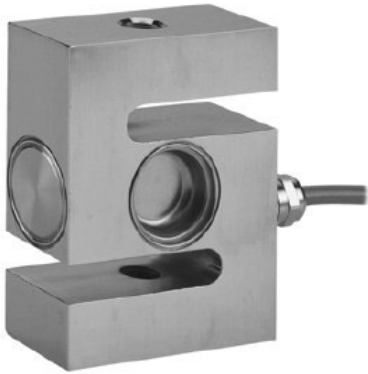


MS4 Sensor

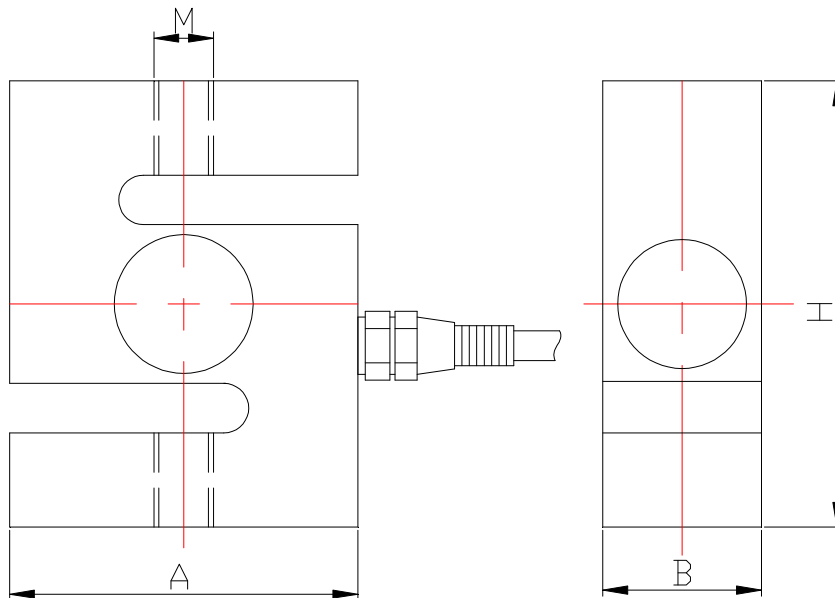
S-Type Load Cell



DESCRIPTION

MS4 is a Stainless Steel S-Type sensor; Its Welded Sealing, make this sensor ideally suited for a wide range of applications of process weighing and force measurements.

OUTLINE DIMENSIONS in millimeters (mm)

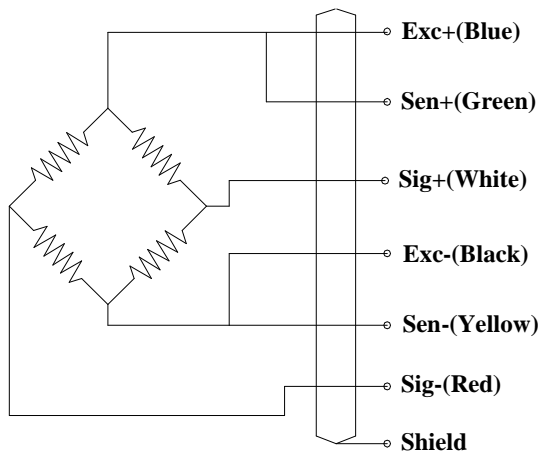


Capacity kg	Size mm				Weight (kg)
	A	B	H	M	
500	70	32	90	M12	1.6
1000,2000	70	32	90	M16×2	1.6
3000,5000	100	45	120	M24×2	4.3

SPECIFICATIONS

Capacity	kg	500, 1000, 2000, 3000, 5000
Rated output	mv/v	2.0±0.002
Non-linearity	%F.S	0.03
Hysteresis	%F.S	0.03
Creep in 30 minutes	%F.S	0.03
Zero balance	%F.S	±1
Input resistance	Ω	400±20
Output resistance	Ω	350±3
Insulation resistance	MΩ	≥5000
Excitation voltage	V	10V (maximum 15V) AC/DC
Environmental protection		IP67
Safe overload	%F.S	150
Ultimate overload	%F.S	300
Operating temperature range	°C	-10~+40
Material		Stainless steel
Cable Length	m	5

Wiring Schematic Diagram



FEATURE

- Capacities 500~5000kg
- Stainless Steel
- Suitable hopper (Tank Weighing), hybrid Scales, belt Weighing, lever arm conversions, material testing machines, vibrations filling equipment, dynamometers.

INTERCHANGEABLE PRODUCTS

- Vishay Model 620