

MS3 Sensor

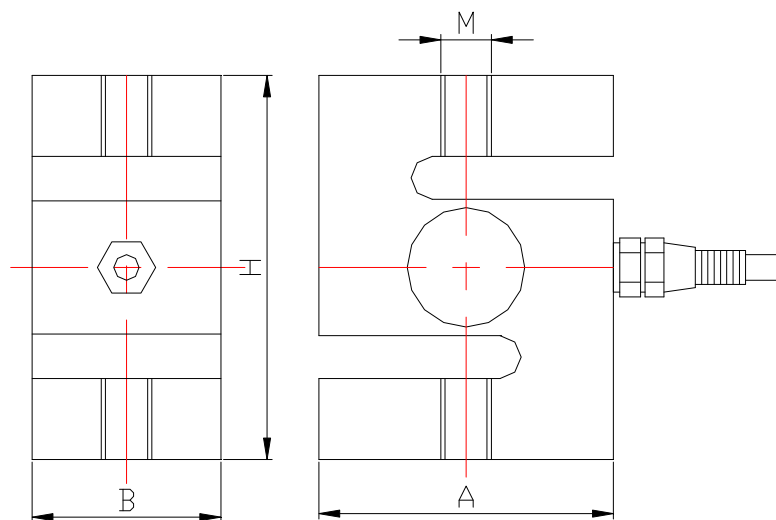
S-Type Load Cell



DESCRIPTION

S Type sensor as the name indicated can be easily identified by S-shaped body; They can be loaded either in tension or compression, and used for single or multiple-cell application if the output is rationalized.

OUTLINE DIMENSIONS in millimeters (mm)

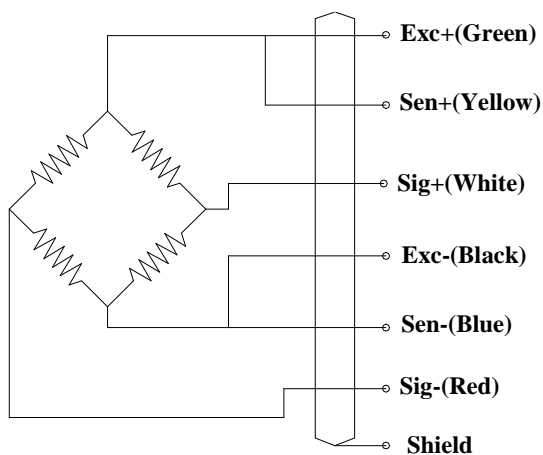


Capacity kg	Size mm				Weight (kg)
	A	B	H	M	
2000	70	45	86	M16×1.5	2.2
3000	80	50	100	M18×1.5	3.14
5000	92	58	130	M20×2	5.5

SPECIFICATIONS

Capacity	kg	2000, 3000, 5000
Rated output	mv/v	2.0±0.002
Non-linearity	%F.S	0.03
Hysteresis	%F.S	0.03
Creep in 30 minutes	%F.S	0.03
Zero balance	%F.S	±1
Input resistance	Ω	381±4
Output resistance	Ω	350±1
Insulation resistance	MΩ	≥5000
Excitation voltage	V	10V (maximum 15V) AC/DC
Environmental protection		IP67
Safe overload	%F.S	150
Ultimate overload	%F.S	300
Operating temperature range	°C	-10~+40
Material		Alloy steel & Stainless steel
Cable Length	m	5

Wiring Schematic Diagram



FEATURE

- Capacities 2000~5000kg
- Compact structure
- Suitable for electromechanical scale, crane scale, hopper scale and various special scales

INTERCHANGEABLE PRODUCTS

- METTLER TOLEDO Model TSB