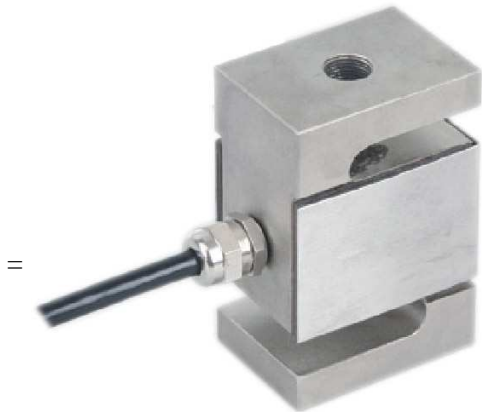


MS2 Sensor

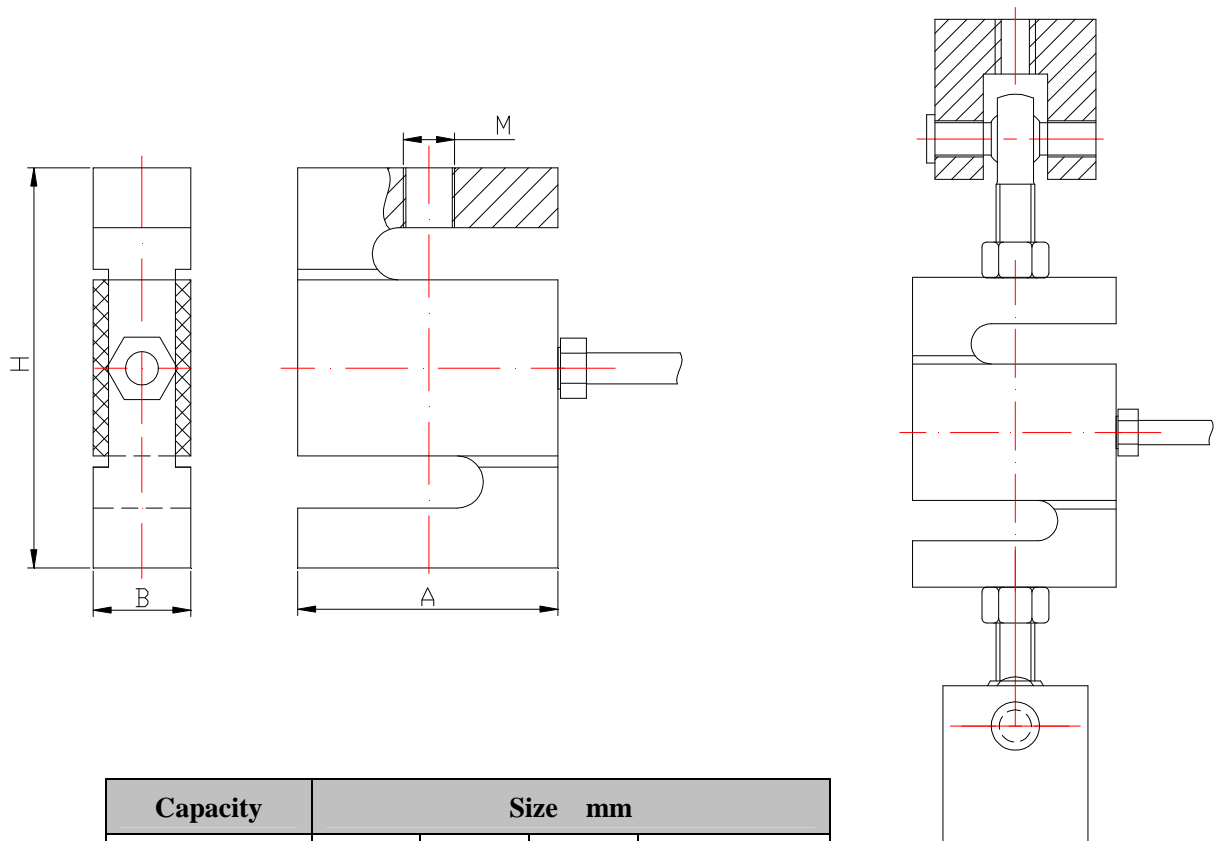
S-Type Load Cell



DESCRIPTION

MS2 is a tension sensor made from alloy steel nickel plated. Typically it is used in suspended hoppers for general industry purposes. MS2 is available in capacities of 50,100,200,300,500,1000kg.

OUTLINE DIMENSIONS in millimeters (mm)

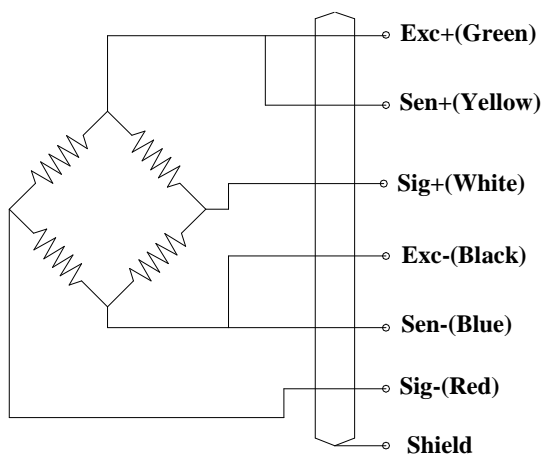


Capacity	Size mm			
	A	B	H	M
kg				
50, 100, 200	50.8	18.5	77	M10×1.0
300	50.8	24.4	77	M10×1.0
500	50.8	24.4	77	M12×1.0
1000	50.8	36	77	M12×1.0

SPECIFICATIONS

Capacity	kg	50, 100, 200, 300, 500, 1000
Rated output	mv/v	2.0±0.002
Non-linearity	%F.S	0.03
Hysteresis	%F.S	0.03
Creep in 30 minutes	%F.S	0.03
Zero balance	%F.S	±1
Input resistance	Ω	381±4
Output resistance	Ω	350±1
Insulation resistance	MΩ	≥5000
Excitation voltage	V	10V (maximum 15V) AC/DC
Environmental protection		IP67
Safe overload	%F.S	150
Ultimate overload	%F.S	300
Operating temperature range	°C	-10~+40
Material		Alloy steel &Stainless steel
Cable Length	m	5

Wiring Schematic Diagram



FEATURE

- Capacities 50~1000kg
- Compact structure
- Suitable for electromechanical scale, crane scale, hopper scale and various special scales

INTERCHANGEABLE PRODUCTS

■ METTLER TOLEDO Model TSC