

MSB3 Sensor

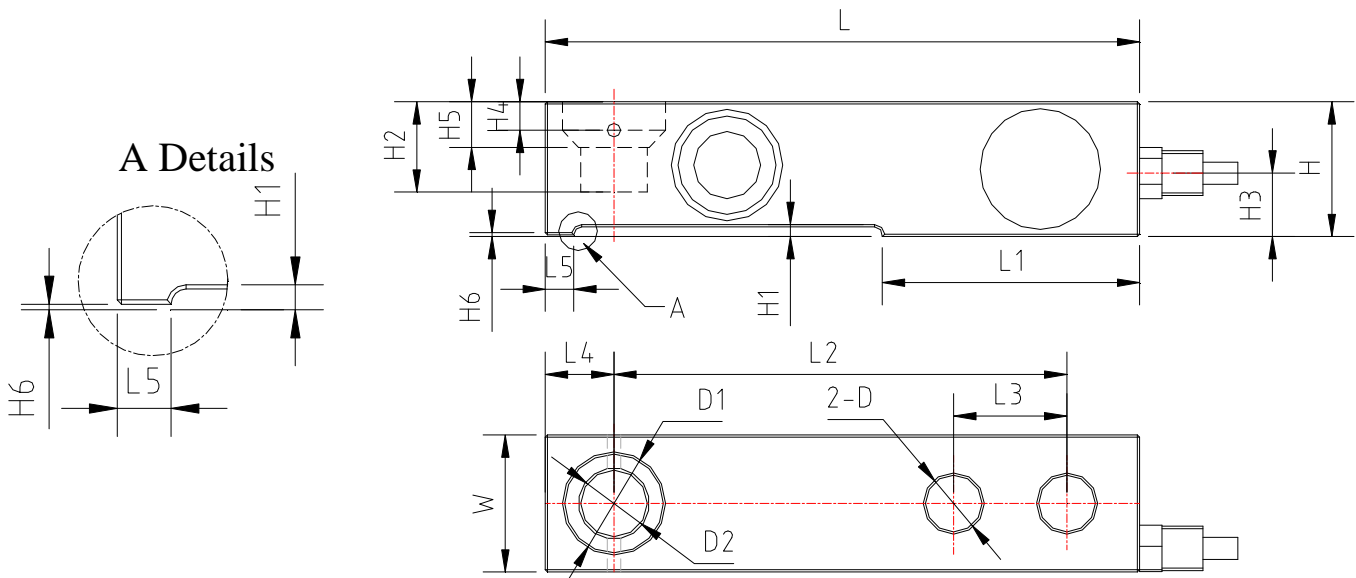
Single-Ended Beam



DESCRIPTION

It is a single-ended shear beam sensor designed for multiple cell applications such as low profile platform or small tank scales when used with proper mounting accessories. It is insensitive to side loading and capable of reversed loading.

OUTLINE DIMENSIONS in millimeters

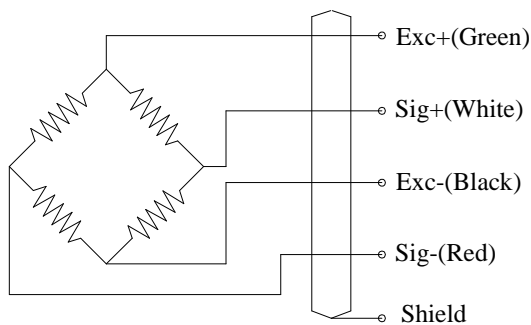


Capacity	Size mm(inch)								
	D	D1	D2	H	H1	H2	H3	H4	H5
220~1100kg	12.7	22.2	15.9	30.2	1.8	17.3	16	4.5	7.9
500~2500lb	(0.50)	(0.88)	(0.62)	(1.19)	(0.07)	(0.68)	(0.63)	(0.18)	(0.31)
2200kg	12.7	22.2	15.9	36.6	2.5	22.9	19.6	9.2	12.7
5000lb	(0.50)	(0.88)	(0.62)	(1.44)	(0.10)	(0.90)	(0.77)	(0.36)	(0.50)
4400kg	19.05	34.9	22.2	42.9	2.4	29.3	22.6	10.8	17.8
10000lb	(0.75)	(1.38)	(0.88)	(1.69)	(0.09)	(1.16)	(0.89)	(0.43)	(0.70)
Capacity	Size mm(inch)								
	H6	L	L1	L2	L3	L4	L5	W	
220~1100kg	0.38	133.3	57.7	101.6	25.4	15.4	6.4	30.7	
500~2500lb	(0.015)	(5.25)	(2.27)	(4.00)	(1.00)	(0.61)	(0.25)	(1.21)	
2200kg	2.5	136.6	57.9	101.6	25.4	18.4	--	36.8	
5000lb	(0.1)	(5.38)	(2.28)	(4.00)	(1.00)	(0.72)	--	(1.45)	
4400kg	2.4	171.5	73.8	133.3	38.1	21.4	--	42.9	
10000lb	(0.09)	(6.75)	(2.91)	(5.25)	(1.50)	(0.84)	--	(1.69)	

SPECIFICATIONS

Capacity	kg lb	220, 550, 1100, 2200, 4400kg 500, 1250, 2500, 5000, 10000 lb
Rated output	mv/v	2.0±0.5%
Non-linearity	%F.S	0.05
Hysteresis	%F.S	0.05
Creep in 30 minutes	%F.S	0.03
Zero balance	%F.S	±1
Input resistance	Ω	380±2
Output resistance	Ω	351±2
Insulation resistance	MΩ	≥5000
Excitation voltage	V	10V (maximum 15V) AC/DC
Environmental protection		IP67
Safe overload	%F.S	150
Ultimate overload	%F.S	300
Operating temperature range	℃	-10~+40
Material		Alloy steel & Stainless steel
Cable Length	m	6

Wiring Schematic Diagram



FEATURE

- Capacities 500lb~10Klb,
- Alloy tool steel construction
- tanks and silos.
- Overload protection

AVAILABLE

- 6-wire circuit
- Digital
- Amplifier mode 4-20mA & 0-5V

INTERCHANGEABLE PRODUCTS

- METTLER TOLEDO Model 0745A