

MSB2 Sensor

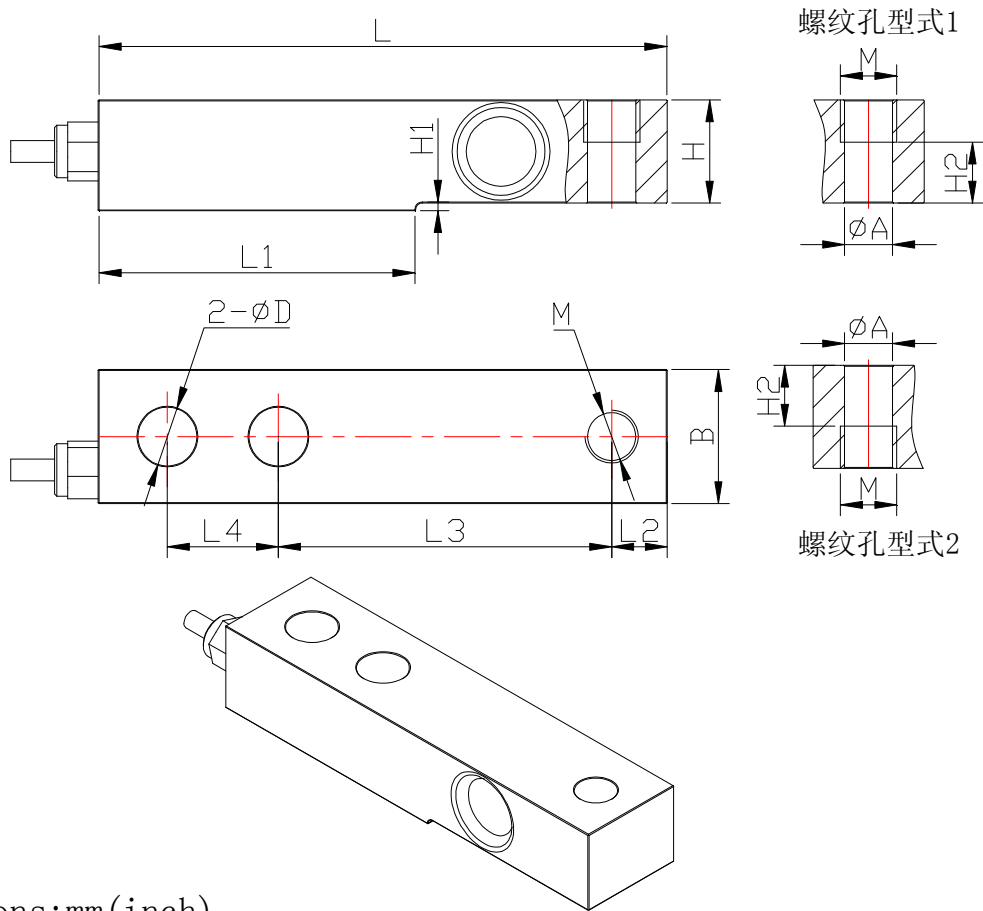
Single-Ended Beam



DESCRIPTION

It is a single-ended shear beam sensor designed for multiple cell applications such as low profile platform or small tank scales when used with proper mounting accessories. It is insensitive to side loading and capable of reversed loading.

OUTLINE DIMENSIONS in millimeters



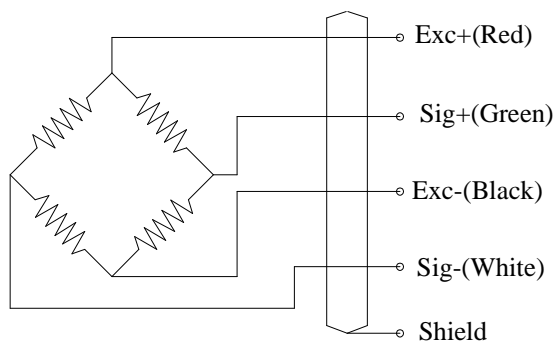
Dimensions:mm (inch)

(1b)	H2	D	M	A	B	H	L	L4	L3	L2	L1	H1
250,500	12.7 (0.50)	13.5 (0.53)	1/2-20UNF-2B	13.5 (0.53)	30.7 (1.21)	23.6 (0.93)	130.1 (5.12)	25.4 (1.00)	76.2 (3.00)	12.7 (0.50)	72.6 (2.86)	1.8 (0.07)
500,1K,2K, 3K,4K,5K	15.8 (0.62)	13.5 (0.53)	1/2-20UNF-2B	13.5 (0.53)	30.7 (1.21)	28.45 (1.12)	130.1 (5.12)	25.4 (1.00)	76.2 (3.00)	12.7 (0.50)	72.6 (2.86)	1.8 (0.07)
5K,10K	19.1 (0.75)	19.8 (0.78)	3/4-16UNF-2B	19.8 (0.78)	36.6 (1.44)	34.04 (1.34)	171.5 (6.75)	38.1 (1.50)	95.3 (3.75)	19.1 (0.75)	95.3 (3.75)	2.5 (0.10)

SPECIFICATIONS

Capacity	lb	250, 500, 1000, 2000, 2500, 3000, 4000, 5000, 10000
Rated output	mv/v	3.0±0.002
Non-linearity	%F.S	0.03
Hysteresis	%F.S	0.03
Creep in 30 minutes	%F.S	0.03
Zero balance	%F.S	±1
Input resistance	Ω	380±5
Output resistance	Ω	350±3
Insulation resistance	MΩ	≥5000
Excitation voltage	V	10V (maximum 15V) AC/DC
Environmental protection		IP67
Safe overload	%F.S	150
Ultimate overload	%F.S	300
Operating temperature range	℃	-10~+40
Material		Alloy steel & Stainless steel
Cable Length	m	6

Wiring Schematic Diagram



AVAILABLE

- 6-wire circuit
- Digital
- Amplifier mode 4-20mA & 0-5V

INTERCHANGEABLE PRODUCTS

- HBM Model B35

FEATURE

- Capacities 250lb~10Klb,
- Alloy tool steel construction
- Truck/Rail scales