

MQ3 Sensor

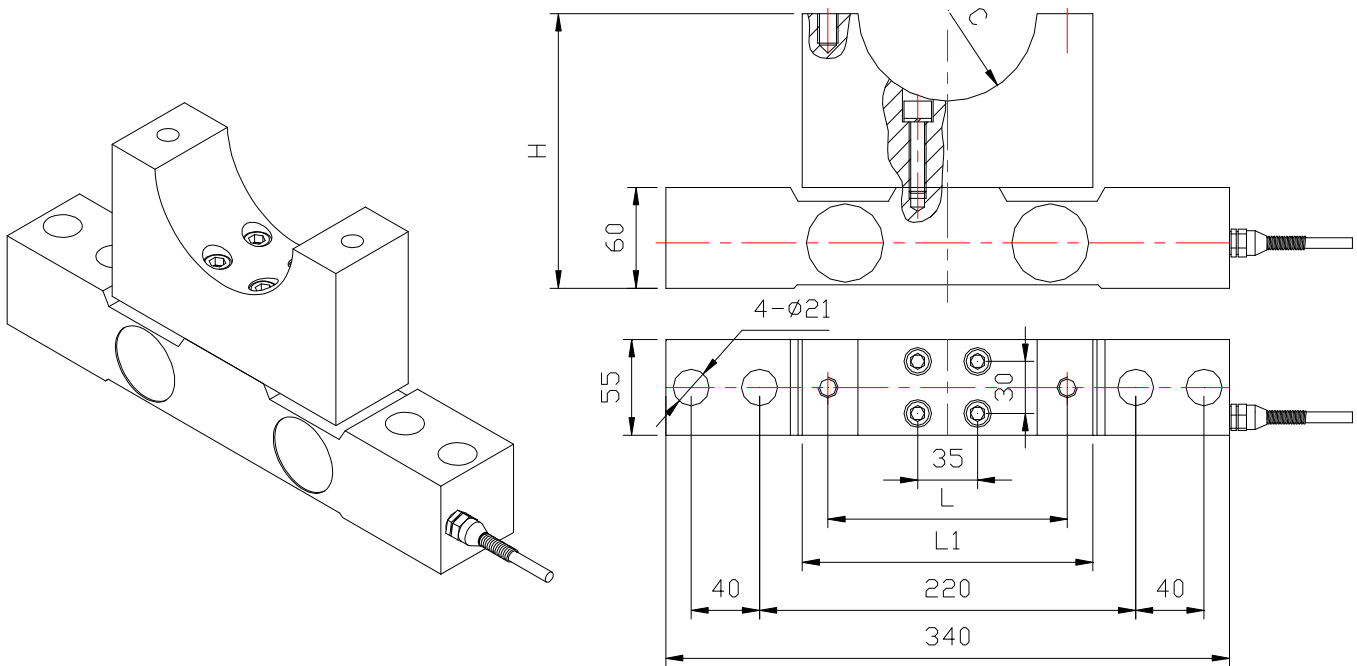
Double ended shear beam sensor



DESCRIPTION

It is a double ended shear beam sensor designed for high capacity silo weighing applications. This sensor will provide a simple, accurate and reliable weighing system.

OUTLINE DIMENSIONS in millimeters (mm)

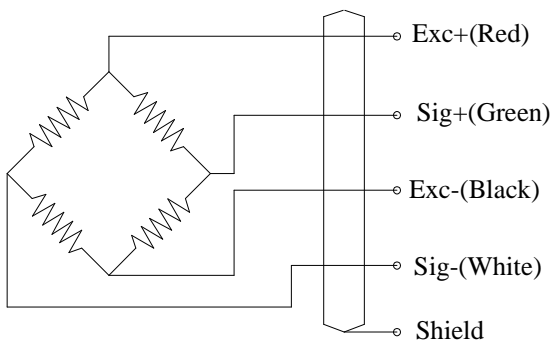


Capacity	Size mm				
	L	L1	H	H1	C
t					
10	110	140	145	115	40
15	130	160	180	110	50
20	140	170	160	107.5	52.5

SPECIFICATIONS

Capacity	t	10, 15, 20
Rated output	mv/v	2.0±0.1%/3.0±0.1%
Non-linearity	%F.S	0.03
Hysteresis	%F.S	0.03
Creep in 30 minutes	%F.S	0.03
Zero balance	%F.S	±1
Input resistance	Ω	700±10
Output resistance	Ω	700±2
Insulation resistance	MΩ	≥5000
Excitation voltage	V	10V (maximum 15V) AC/DC
Environmental protection		IP67
Safe overload	%F.S	150
Ultimate overload	%F.S	300
Operating temperature range	°C	-10~+40
Material		Alloy steel
Cable Length	m	6~12

Wiring Schematic Diagram



FEATURE

- Capacities 10~20 t
- Nickel plated alloy steel construction
- Overhead track scales and special scale