

MZ7 Sensor

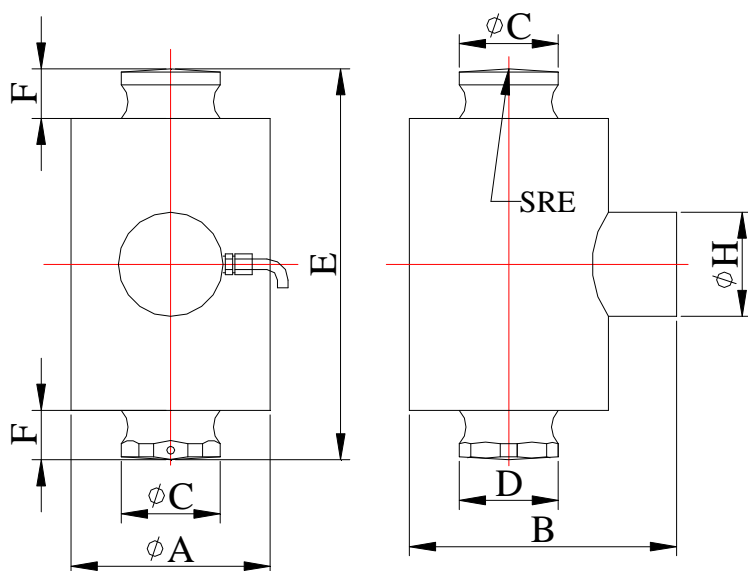
Stainless steel columns in the sensor



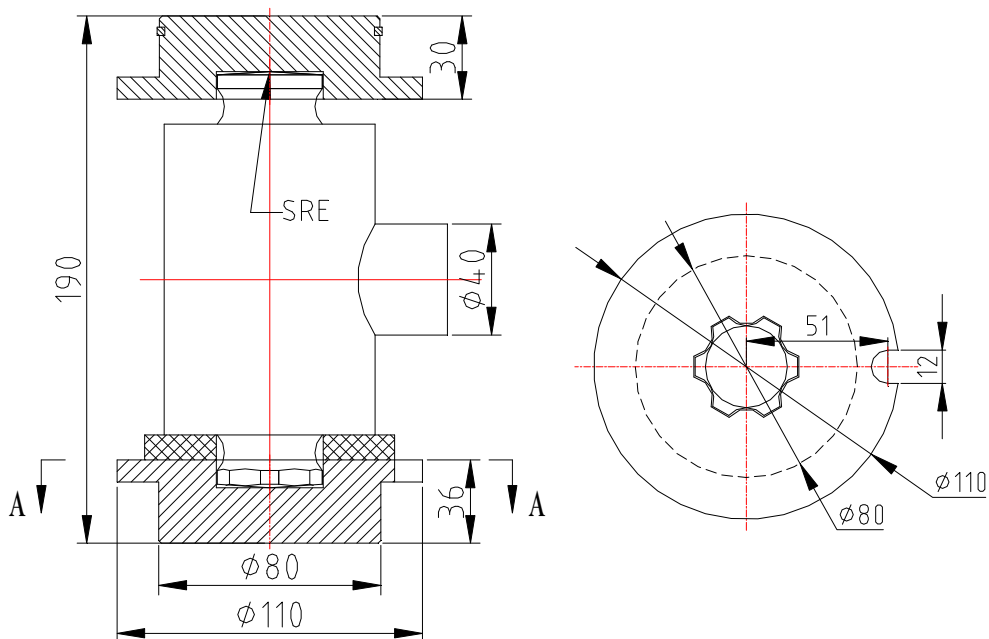
DESCRIPTION

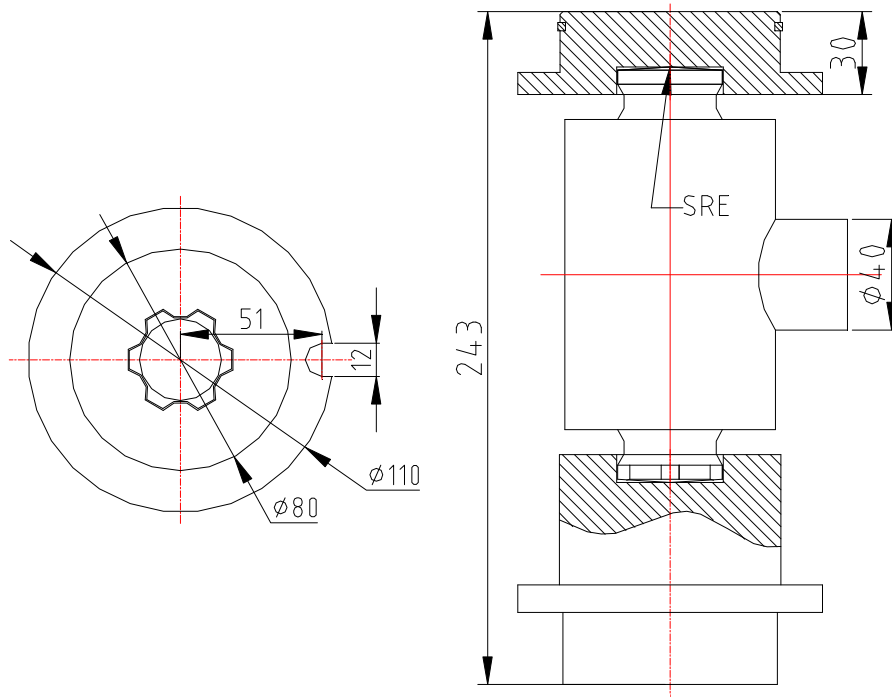
Column type, hermetically sealed structure, IP68 Compression, fast dynamic response, strong anti-overload capability, upper ball head load bearing; Simple to install, easy to use, Suitable for electronic truck scale, dynamic railroad scale and big capacity hopper scale, etc.

OUTLINE DIMENSIONS in millimeters (mm)



Capacity(t)	15, 20, 30	50	100	200, 250
A	76	76	102	159
B	102	102	122	179
C	37.8	37.8	53.8	80
D	35.5	35.5	50.6	75.3
SRE	160	305	305	400
E	150	150	150	195
F	19	19	19	25
H	40	40	40	40

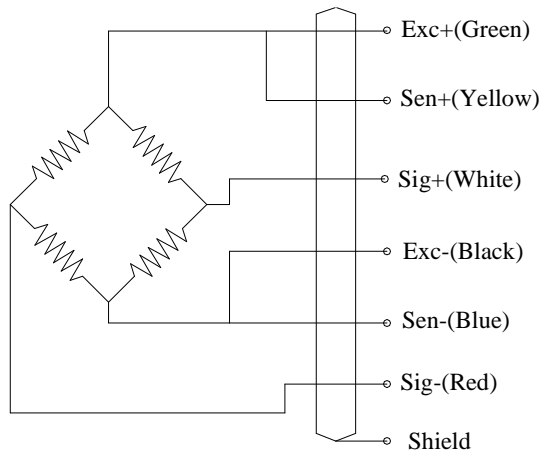




SPECIFICATIONS

Capacity	t	15,20,30,50,100, 200, 250
Rated output	mv/v	2.0±0.002
Non-linearity	%F.S	0.03
Hysteresis	%F.S	0.03
Creep in 30 minutes	%F.S	0.03
Zero balance	%F.S	±1
Input resistance	Ω	1160±10
Output resistance	Ω	1000±3
Insulation resistance	MΩ	≥5000
Excitation voltage	V	10V (maximum 15V) AC/DC
Environmental protection		IP67
Safe overload	%F.S	150
Ultimate overload	%F.S	300
Operating temperature range	℃	-10~+40
Material		Alloy steel & Stainless steel
Cable Length	m	13

Wiring Schematic Diagram



FEATURE

- Capacities 15~250 ton
- Stainless steel construction
- Simple to install
- Self restoring design

INTERCHANGEABLE PRODUCTS

- METTLER TOLEDO Model 0782

AVAILABLE

- Digital Load Cell
- Amplifier mode